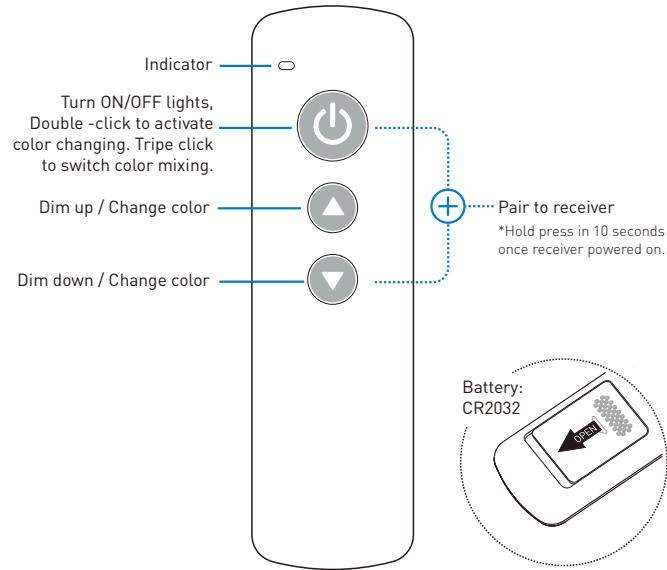


LED Remote Controller

Model: BR02-C

Function



General Purpose Dimming & Color Control

Operation

1. Pair the remote to receiver

The remote controller needs to be paired to receiver to work. User can pair up to 5 remote controllers to one receiver and each single remote controller can be paired to any receiver.

To pair a new remote to the receiver, please operate with following two steps:

- 1). Cut off the power of receiver and power on again after more than 5 seconds.
- 2). Hold press remote (⊕) and (⬇️) key simultaneously and briefly within 10 seconds after receiver powered on.

After this operation, the remote is paired to the receiver and ready to work.

2. Unpair the remote controller

To unpair the remote from the receiver, please operate with following two steps:

- 1). Cut off the power of receiver and power on again after more than 5 seconds.
- 2). Hold press all 3 keys simultaneously within 10 seconds after receiver powered on.

After this operation, the remote will be unpaired from receiver.

3. Adjust color

For working with multi-color receivers, user can double click the (⊕) key to activate the color adjusting mode. After double click, the (⬆️) and (⬇️) key will swap to color adjusting function shortly. The indicator will flash at the color adjusting mode. The up and down key will swap back to dimming function after no operation for a while.

4. Change RGB/White mixing mode

For RGB+White and RGB+CCT application, user can switch the color mixing mode between white[CCT], RGB and White[CCT]+RGB mode.

To click the (⊕) key for 3 times rapidly, the color mixing mode on receiver will change.

Specification

Working voltage	DC 3V, CR2032 battery
Wireless protocol	Umi protocol based on SIG BLE Mesh
Frequency band	2.4GHz ISM band
Wireless power	< 7dBm
Working temperature	-20-55°C(-4-131°F)

Umi智能无线

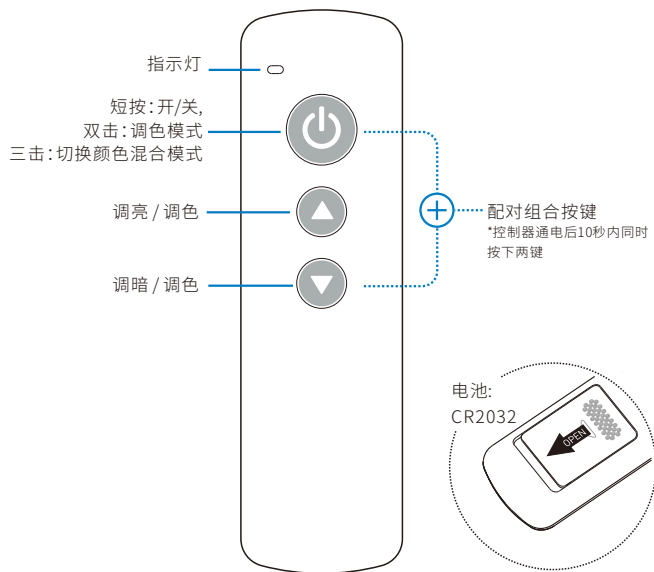
LED遥控器

型号: BR02-C

通用型号

支持调光/调色

功能





操作方法

1. 配对到灯具或控制器

遥控器需要与灯具或控制器配对才能工作。一个灯具或控制器最多可以配对5个遥控器, 遥控器则可以与任意灯具或控制器配对。

请按以下步骤操作来完成遥控器配对:

- 1). 将目标灯具或控制器断电, 在超过5秒后再通电。
- 2). 灯具或控制器通电后10秒内, 同时按下遥控器上的  与  键并保持约1秒钟完成配对操作。

2. 取消配对

请按照以下2个步骤来完成取消配对操作:

- 1). 将目标灯具或控制器断电, 在超过5秒后再通电。
- 2). 灯具或控制器通电后10秒内, 同时按下遥控器上所有三个按键并保持约1秒钟完成取消配对操作。

3. 调节颜色

此遥控器还可以调节冷暖白、RGB、RGBW或RGB CCT灯具或控制器的颜色。双击开关键可以激活颜色调节模式, 在颜色调节模式下, 上下按键将切换为调节颜色功能, 同时指示灯会慢闪。在无操作大约5秒后, 上下按键会自动切换回亮度调节功能。

4. 切换颜色混合模式

此遥控器在与RGBW或RGB CCT灯具或控制器配对使用时, 可以通过快速按三次开关键切换颜色混合模式。颜色混合模式会在单白光、单RGB光和RGB加白光三个模式之间循环切换。

规格

工作电压	DC 3V, CR2032纽扣电池
无线协议	Umi协议, 基于 SIG BLE Mesh
频段	2.4GHz ISM band
无线功率	< 7dBm
工作温度	-20-55°C (-4-131°F)

Rayrun