

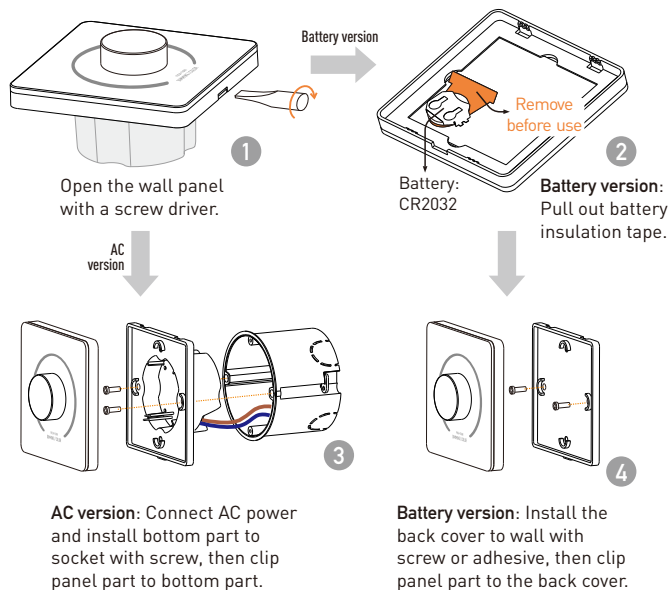
Umi Smart Wireless

Wall panel rotary remote controller

Model: BW01-C(A/B)

General Purpose Battery / AC power Dimming / Color

Quick installation guide



Introduction

This wall panel is designed to control compatible Single color, CCT, RGB, RGB+White or RGB+CCT LED controllers, drivers or lighting fixtures via Umi wireless protocol. There are two power supply options with AC power or cell battery. The AC version can fit traditional wall installation with AC power and the battery version can be easily installed at any preferred place. Besides ON/OFF and dimming operation, user can also adjust color and mixing mode by simple double click operation.

AC version installation

1. Open the touch panel

The wall panel needs to be opened before installation. Please use a slot type screw driver to twist in the bottom side slot and open the panel. Please refer to picture 1.

2. Connect the AC power

Push the top of connector on the bottom part back and insert the L and N AC power cables. The maximum cable gauge is 1.5mm² or AWG16.

CAUTION! Cut off the AC power before installation to avoid electric shock!

3. Install the panel

Install the bottom part to wall socket with screws. After the bottom part is installed, clip the front panel part to the bottom part to finish the installation. Please refer to picture 3.

Battery version installation

1. Open the touch panel

The wall panel needs to be opened before installation. Please use a slot type screw driver to twist in the bottom side slot and open the panel. Please refer to picture 1.

2. Prepare the battery

For new wall panel, please pull out the insulation tape under the battery. To change the battery please slide the battery out from the battery socket and install a new one. The battery type is CR2032. Please refer to picture 2.

3. Install the panel

Install the back cover to preferred place by screw or double side adhesive tape, then clip the front panel part to the back cover and finish the installation. Please refer to picture 4.

Rayrun

■ Operation

1. Pair / unpair the wall panel to receiver

The wall panel needs to be paired to receiver to work. User can pair up to 5 wall panels to one receiver and each wall panel can be paired to any receiver.

To pair or unpair wall panel to the receiver, please operate with 2 steps:

- 1). Cut off the power of receiver and power on again after more than 5 seconds.
- 2). Within 10 seconds of receiver powered on, press the knob for 5 times continuously and quickly to pair the panel; To unpair the panel, please press 7 times instead of 5.

2. Turn on/off the lights

Press the knob to turn on/off the lights. When the lights are off, rotating the knob clockwise will also turn the lights on to the previous brightness.

3. Turn on to minimum brightness

When the lights are off, rotating the knob counter clockwise will turn on the lights to the minimum brightness level.

4. Dim up and down

Rotate the knob clockwise to dim up and counter clock wise to dim down. There's no position limit for the rotary knob, user can endlessly rotate the knob in one direction.

5. Adjust color

For working with multi-color receivers, user can double click the switch to activate the color adjusting mode. After double click, rotating will swap to color adjusting function shortly. The rotating will swap back to dimming function after no operation for a while.

6. Change RGB/White mixing mode

For RGB+White and RGB+CCT application, user can switch the color mixing mode between white(CCT), RGB and White(CCT)+RGB mode.

To click the key for 3 times rapidly, the color mixing mode on receiver will change.

7. Turn ON/OFF beep sound

A beeper is equipped in the panel and the beep sound is ON as default. To turn on/off the beeper sound, please hold press the switch for about 1 second, the beeper on/off status will swap.

■ Specification

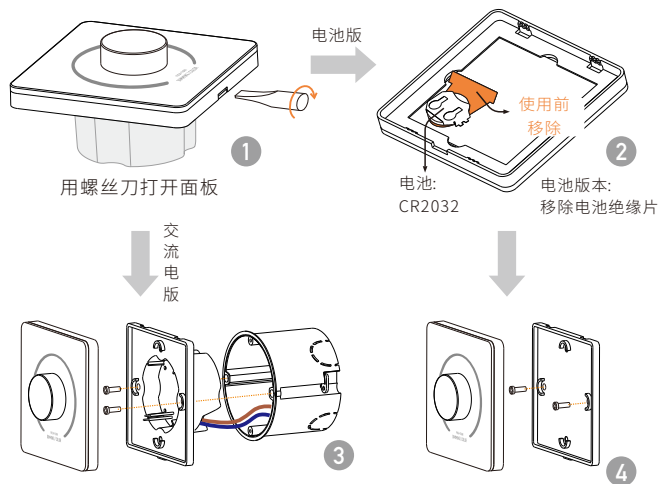
AC version working voltage	AC90-265V
Battery version working voltage	DC3V, CR2032 battery
Wireless protocol	Umi protocol based on SIG BLE Mesh
Frequency band	2.4GHz ISM band
Wireless power	< 7dBm
Working temperature	-20-55°C[-4-131°F]
Panel dimension	86x86x10mm (Europe standard)

墙面旋钮遥控器

型号: BW01-C(A/B)

通用型号
支持调光/调色

快速安装指南



交流电版本: 连接交流电源并用螺钉将底壳安装到墙面接线盒, 然后将面板卡到底壳上。

电池版: 用螺钉或双面胶将后盖安装到墙上, 然后将面板卡到后盖上。

简介

本旋钮面板可以通过Umi无线协议控制兼容的单色、CCT、RGB、RGBW或RGCCT LED 控制器、驱动电源或其他照明设备。本产品有交流供电和纽扣电池供电的两种版本可供选择, 交流电版本可安装在有零火线供电的墙面接线盒上, 电池版本则可以安装在任何需要的位置。除了基本的开/关和调光功能外, 本产品还可用于多通道灯具, 并通过双击、三击操作来调整颜色和通道混合模式。

交流供电版本的安装方法

1. 打开面板

安装前需要先打开本产品。请使用一字型螺丝刀插入底部侧槽并旋转螺丝刀来撬开面板。请参考图1。

2. 连接交流电

按下底部接线座的塑料按钮, 并接入交流电零线和火线。电缆的最大尺寸为 1.5mm^2 。

警告! 在安装前请切断交流电源, 以免触电!

3. 安装面板

用螺钉将面板底部安装到墙面接线盒, 然后将面板上部卡入。请参考图3。

电池版本的安装方法

1. 打开面板

安装前需要先打开本产品。请使用一字型螺丝刀插入底部侧槽并旋转螺丝刀来撬开面板。请参考图1。

2. 纽扣电池

新产品在初次使用时请拔出电池下方的绝缘片。如果要更换电池, 请将电池从电池插槽中推出并更换, 电池为CR2032型纽扣电池。请参考图2。

3. 安装面板

用螺钉或双面胶将后盖安装到墙上, 然后将面板卡到后盖上。请参考图4。

■ 操作方法

1. 配对到灯具或控制器

本产品需要与灯具或控制器配对才能工作。一个灯具或控制器最多可以配对5个遥控器，遥控器则可以与任意匹配灯具或控制器配对。

请按以下步骤操作来完成遥控器配对或取消配对：

- 1). 将目标灯具或控制器断电，在超过5秒后再通电。
- 2). 在灯具或控制器通电后的10秒内，快速连续按下旋钮5次完成配对；或者快速连续按下7次取消配对。

2. 开/关灯

按下旋钮打开/关闭灯光。当灯关闭时，顺时针旋转旋钮也会将灯打开到之前的亮度。

3. 开启到最低亮度

当灯关闭时，逆时针旋转旋钮将把灯打开到最低亮度级别。

4. 调节亮度

顺时针旋转旋钮调亮，逆时针旋转调暗。旋钮没有位置限制，用户可以向一个方向无限旋转旋钮。

5. 调整颜色

对于多色灯具或控制器，用户可以快速按下旋钮两次来激活颜色调整模式。双击后，旋转旋钮即可调整颜色。在一段时间无操作后，旋转旋钮的功能将切换回亮度调整功能。

6. 更改RGB与白光的混合模式

对于RGBW和RGB+CCT应用，用户可以在白色(CCT)、RGB和白色(CCT)+RGB模式之间切换混色模式。

连续快速按下旋钮3次，灯具的颜色混合模式将按以上三种模式循环改变。

7. 打开/关闭操作提示音

本产品的操作提示音默认为打开状态，如果想切换提示音的开关状态，请按下旋钮开关约1秒钟来关闭或打开提示音。

■ 规格

交流版工作电压	AC90-265V
电池版工作电压	DC3V, CR2032纽扣电池
无线协议	Umi协议, 基于SIG BLE Mesh
频段	2.4GHz ISM band
发射功率	< 7dBm
工作温度	-20-55 °C(-4-131 °F)
面板部分尺寸	86x86x10mm