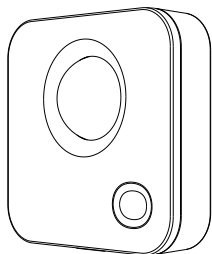


Presence Sensor & Remote Controller

Model: PS01(-L)



Presence Sense



Touch Operation



ON/OFF & Dimming



5 Years Battery Life



On-time Adjustable



ON Lux Adjustable

Function

PS01 is a passive presence sensor with integrated touch key. It needs to be used with Umi compatible LED controller or driver to turn on lights while presence detection, user also can use it as a remote controller with on/off, dimming and color tuning function by the touch key.

There's advanced feature with turn off timer, turn on brightness, detection sensitivity and luminance trigger level can be adjusted from the Umi Smart app. With the long battery life option (-L) and ultra-low standby power, it can work more than 5 years with free of battery replacement.

Installation



Fig.1 Detection range

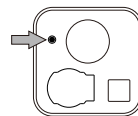


Fig.2 Pairing key

1. Detection range

The sensor can detect human moving in a cone shape within 2 to 8 meters distance and 120-degree width (Fig.1). The detection sensitivity is adjustable with 3 levels from Umi Smart app, please refer to the app setting description in this manual.

2. Pair and unpair to receiver

The sensor needs to be paired to LED controller or driver before proper working. To pair the sensor, please operate with following steps:

1. Open the sensor cover and find the pairing key. (Fig.2)
2. Cut off the power of the receiver to be paired, and power on the receiver again after more than 10 seconds.
3. Within 10 seconds after receiver powered on, short press the sensor's pairing key to pair to the receiver, or hold press the pairing key to unpair from the receiver.

3. Built-in ultra long life battery (-L model)

Besides the main CR2032 cell battery socket, the PS01-L ultra long battery life model has a factory built-in battery. PS01-L can work for more than 5 years without the main battery. After the built-in battery runs out, user still can install the main CR2032 battery for normal operation and get average battery life time up to 2 years.

■ Operation

4. Touch key operation

The touch key is located in the groove of sensor surface, touch key will be activated when human detection is triggered. User can operate the touch key by short touch, hold touch, double click touch or triple click touch. The different touch operation will result as following:

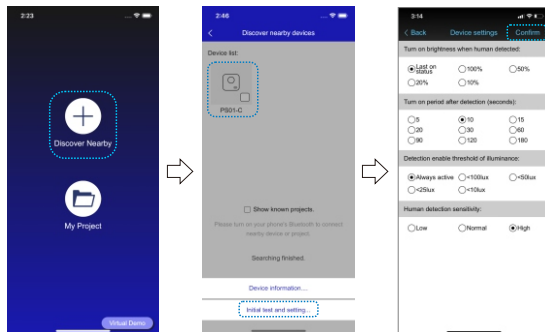
- 1. Turn on/off:** Short touch to toggle on/off the light.
- 2. Dimming:** Hold touch to dim up/down. The dimming direction will reverse on each hold touch operation.
- 3. Activate color tuning** (not available for single color receivers): Double click to activate color tuning mode. In color tuning mode, the indicator will flash and user can adjust color by hold press the key. The color tuning mode will be inactivated after 5 seconds without operation.
- 4. Change color mixing** (for RGB+W and RGB+CCT receivers only): Triple click to change the color mixing mode between RGB only, white only and RGB+White.

5. Advanced setting from app

The turn off timer, turn on brightness, detection sensitivity and luminance trigger level can be adjusted from the Umi Smart smartphone app.

To setup the these features from app, please operate with following steps:

1. Download the 'Umi Smart' app by scanning the QR code.
2. Open the app and press the sensor's pairing key to activate app detection.
3. Tap the 'Discover nearby' button on the app, and find the sensor.
4. Tap on the sensor icon and select 'Initial test and setting' from popup menu.
5. Setup the listed features from dialogue box.
6. Tap 'Confirm' to save the sensor setting.



6. Inactive mode

The sensor can be set to inactive mode by double-click the key under the top cover (Fig.2). The sensor will be deactivated for all function until pressing this key again. The battery life will also extend at inactive mode.

App download link:



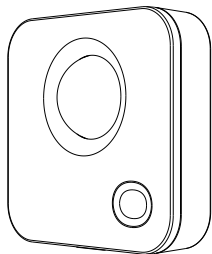
■ Specification

Main battery	CR2032 cell battery
Built-in battery	600mAh cell battery, -L model only
Wireless protocol	Umi protocol based on SIG BLE Mesh
Frequency band	2.4GHz ISM band
Wireless power	< 7dBm
Working temperature	-20-55 °C(-4-131 °F)

Umi智能无线

人体感应遥控器

型号: PS01(-L)



人体感应



触摸操作



开关及调光



5年续航



关灯延时可调



照度阈值可调

■ 功能

PS01 是一款集成触摸遥控的人体感应传感器,它可以与Umi兼容的LED控制器或驱动一起使用,用户也可以将其用作遥控器,实现开关、调光和调色功能。

感应生效后的灯光开启亮度、开启时间、环境照度阈值和感应灵敏度调整均可通过Umi Smart手机应用程序进行调整。本产品还具有超长待机的PS01-L型号,可以满足5年以上免换电池的应用场合。

■ 安装方法

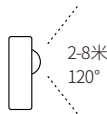


Fig.1 探测范围

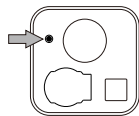


Fig.2 配对按钮

1. 探测范围

该传感器可以检测到120度锥形范围2-8米内的人体移动(图1)。传感器的感应灵敏度可以在Umi Smart手机应用中调节,调节方法请参考本说明书的相关章节。

2. 配对到灯具或控制器

传感器需要与目标灯具或控制器配对才能正常工作。要配对传感器,请按以下步骤操作:

1. 打开传感器上盖,找到配对按钮(图2);
2. 切断灯具或控制器电源,在超过10秒钟后再重新通电。
3. 在灯具或控制器通电后的10秒钟内,短按传感器上的配对按钮完成配对操作,或者长按配对按钮来取消配对。

Rayrun

3. 内置超长待机电池(PS01-L机型)

PS01-L机型除了主电池(CR2032)安装座外,还内置了一颗超长待机电池,该机型即使不安装主电池也可以正常工作5年以上。当内置电池耗尽后,用户仍然可以安装CR2032主电池使其正常工作,主电池的平均使用寿命也可以达到两年左右。

■ 操作方法

4. 触摸键操作方法

触摸键位于传感器表面的凹槽中,在检测到人体移动后,触摸按键才可使用。用户可以短按、长按、双击或三次点击来操作触摸键。不同的触控操作功能如下:

1. 开/关灯:短按触摸键。
2. 调节亮度:长按可调节亮度。每次松开再按住触摸键时,调光的明暗方向会反转。
3. 激活调色(单色控制器不可用):双击激活调色模式。在调色模式下传感器指示灯会闪烁,此期间可以长按按键调整颜色。在5秒钟无操作后,长按触摸键回到默认的亮度调节功能。
4. 更改混色模式(仅适用于RGBW和RGB CCT灯具):三次连续单击触摸键,灯具混色状态可在单白色、单RGB色和RGB加白色的三种模式中切换。

5. 使用手机App进行高级设置

感应生效后的灯光开启亮度、开启时间、环境照度阈值和感应灵敏度调整均可通过Umi Smart手机应用程序进行调整。要调整这些设置,请按以下步骤操作:

1. 扫描机身二维码,下载Umi Smart手机app。
2. 打开Umi Smart手机APP,按一下传感器的配对按键来激活传感器的手机连接功能。
3. 在手机app上点击“搜索附近”按钮,找到PS01传感器。

4. 在手机app上点击传感器图标,然后从下方的弹出菜单中选择“初始测试和设置”。

5. 在app设置界面中设置相应参数。

6. 点击app上的“确定”按钮,保存当前设置。



6. 关机模式

快速两次按下配对按键后,传感器将进入关机模式。在关机模式下,本机所有功能均关闭,直到再次按下配对键后才能被激活。在关机模式下,电池寿命也将得到顺延。

■ 规格

扫码下载APP:



主电池	CR2032纽扣电池
内置长寿命电池	600mAh纽扣电池, 仅限PS01-L
无线协议	Umi协议, 基于SIG BLE Mesh
频段	2.4GHz ISM band
无线发射功率	< 7dBm
工作温度	-20-55 °C(-131 °F)