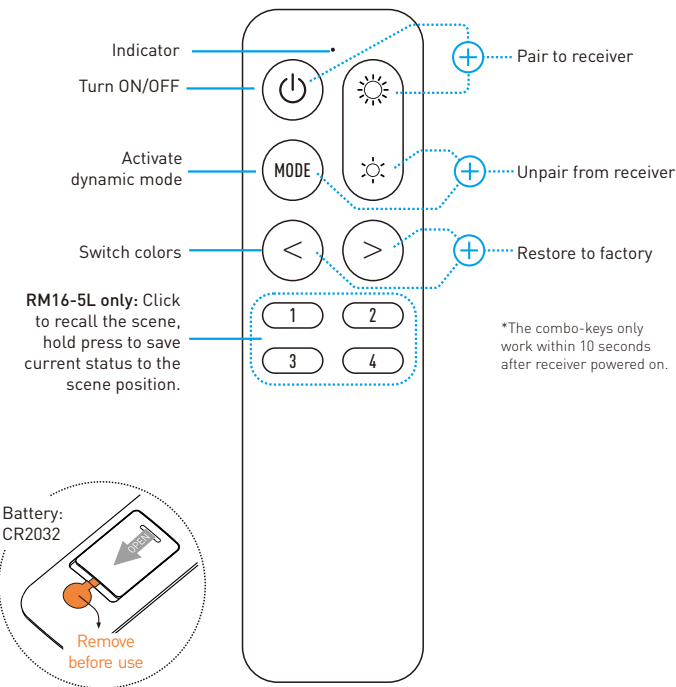


LED Remote Controller

Model: RM16-5/RM16-5L

Function



Operation

1. Pair and unpair the remote to receiver

The remote controller needs to be paired to receiver to work. User can pair up to 5 remote controllers to one receiver and each remote controller can be paired to any receiver.

To pair or unpair remote to the receiver, please operate with following steps:

- 1). Cut off the power of receiver and power on again after more than 5 seconds.
- 2). Press remote (⏻) and ☀️ key simultaneously and briefly within 10 seconds after receiver powered on.
- 3). To unpair the remote from receiver, do the step 1 first, then press remote (MODE) and ☀️ key simultaneously and briefly within 10 seconds after receiver powered on.

2. Load and save scenes

User can load or save scenes with 1-4 digit keys. Short press on 1-4 key can load the saved scene.

To save a scene, please adjust the favorite light status first, then hold press 1-4 digit key to save current status to relative scene position. After save operation, user can load the saved scene by short press the digit key.

3. Restore the controller to factory default

To restore the paired controller or receiver to factory default mode, please operate with following two steps:

- 1). Cut off the power of paired controller/receiver and power on again after more than 5 seconds.
- 2). Press remote (◀️) and (▶️) key simultaneously and briefly within 10 seconds after the paired controller/receiver powered on.

After this operation, the paired controller/receiver will be restored to factory settings, and the remote controller will also be unpaired from the controller/receiver.

Specification

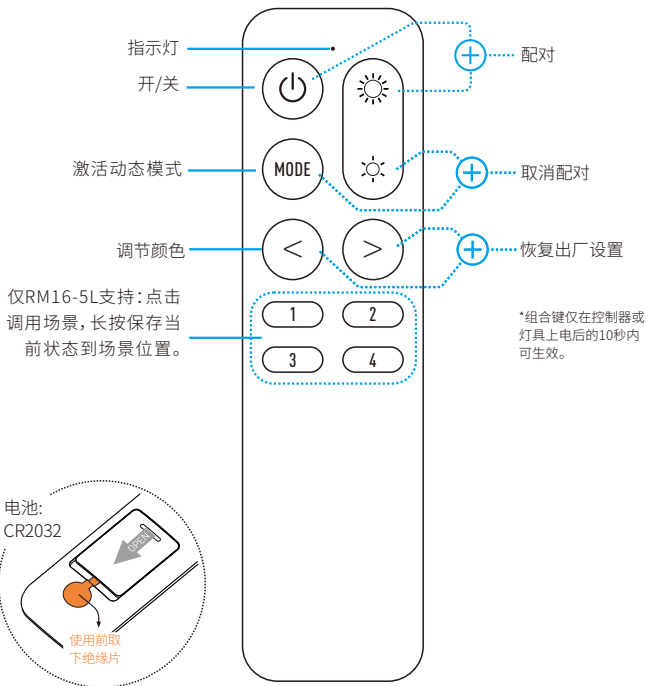
Working voltage	DC 3V, CR2032 battery
Frequency band	433MHz ISM band
Wireless power	< 7dBm
Working temperature	-20-55℃(-4-131℉)

RF无线

LED遥控器

型号: RM16-5/RM16-5L

功能



操作方法

1. 配对到灯具或控制器

遥控器需要与灯具或控制器配对才能工作。一个灯具或控制器最多可以配对5个遥控器, 一个遥控器则可以与任意灯具或控制器配对。

请按以下步骤操作来完成遥控器配对或取消配对:

- 1). 将目标灯具或控制器断电, 在超过5秒后再通电。
- 2). 在灯具或控制器通电后的10秒内, 同时按下遥控器上的 与 键并保持约1秒钟即可完成配对操作。

2. 取消配对

请按以下步骤来完成遥控器取消配对操作:

- 1). 将目标灯具或控制器断电, 在超过5秒后再通电。
- 2). 在灯具或控制器通电后的10秒内, 同时按下遥控器上的 与 键并保持约1秒钟来取消当前遥控器的配对。

3. 调出和保存场景

用户可以通过1-4数字键调出或保存场景。短按1-4键可以调出已保存的场景。

若要保存场景, 请长按1-4数字键将当前灯光效果保存到相应的场景位置。保存场景后, 可以通过短按数字键调出保存的场景。

4. 将控制器恢复出厂设置

请按以下步骤进行操作, 将已配对的控制器或灯具恢复出厂设置:

- 1). 将已配对的灯具或控制器断电, 在超过5秒后再通电。
- 2). 在灯具或控制器通电后的10秒内, 同时按下遥控器上的 与 键并保持约1秒钟。

在这些操作后, 已配对的灯具或控制器就会被恢复出厂设置, 遥控器也会被取消配对。

规格

工作电压	DC 3V, CR2032纽扣电池
频段	433MHz ISM band
无线功率	< 7dBm
工作温度	-20-55 °C (-4-131 °F)

Rayrun